

# UBL12H



Light Efficiency:

31 Lumen/Watt

Light Quality:

CRI: 65.3

Color Temperature:

9811 K

Output: 2015 lm

Peak: 8309 cd

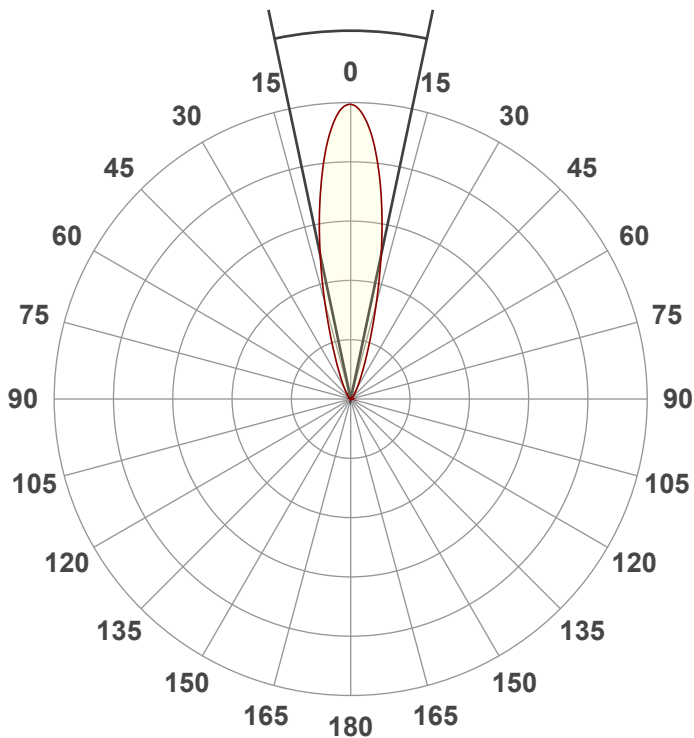
Power: 64.1 W

PF: 0.59



Beam Angle

23.9°



Test:

Full on No UV

Date:

2/6/2024

Note:

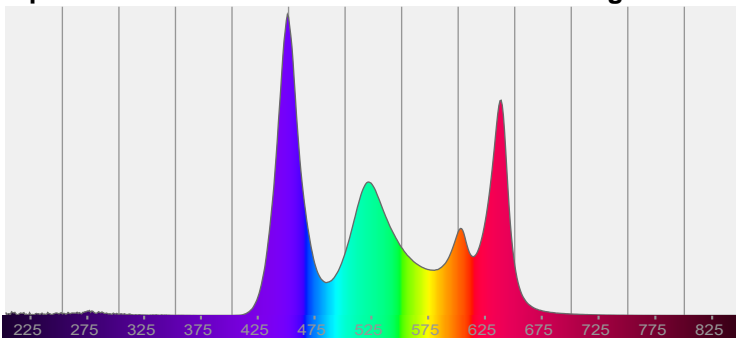
CIE 1931

x: 0.292

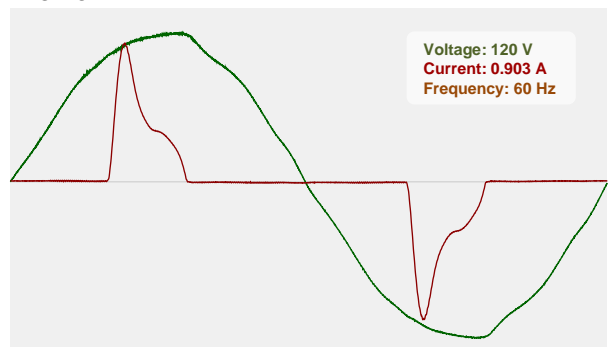
y: 0.269

Spectra

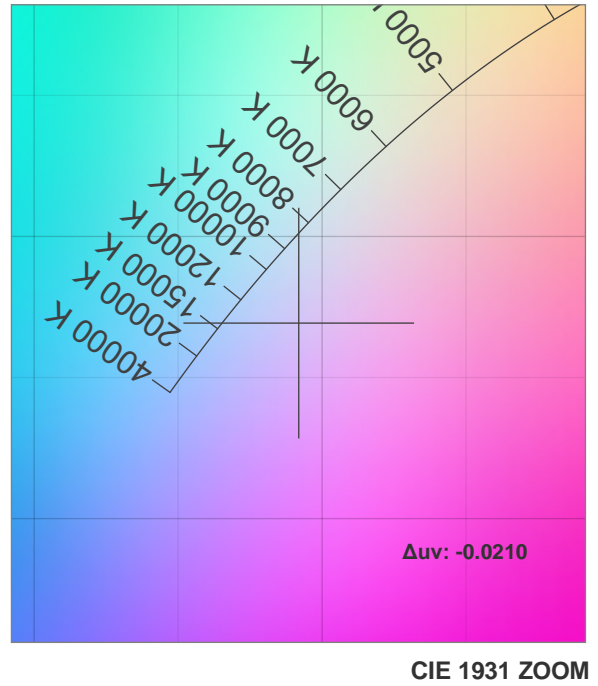
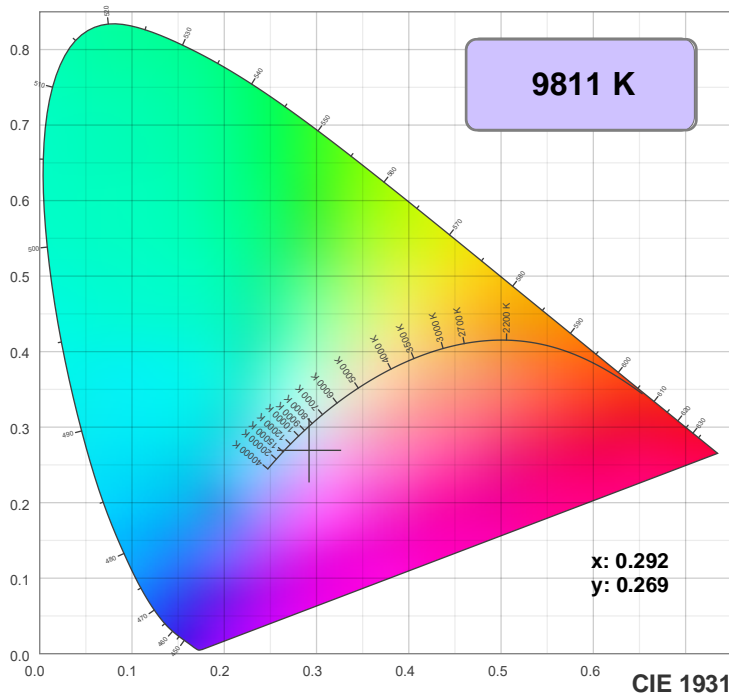
Dominant Wavelength: 360nm



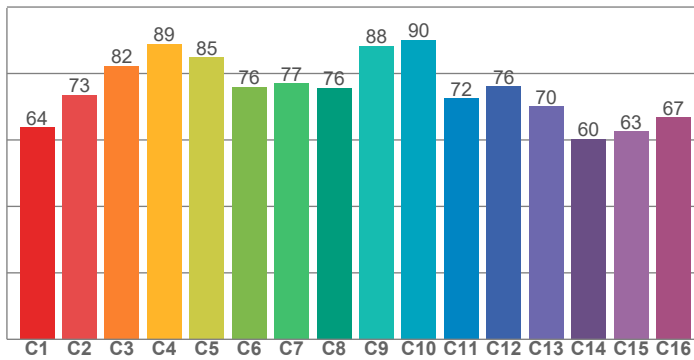
Power



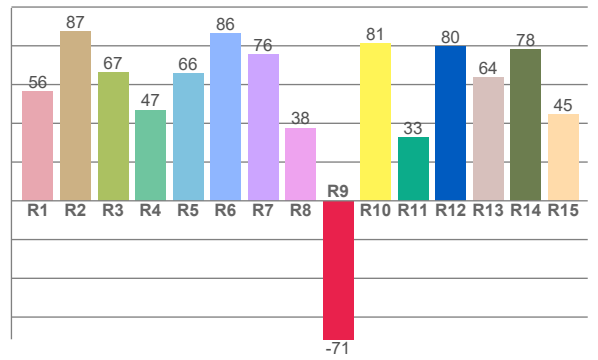
## Color Details



TM30: 77.3



CRI: 65.3 (R1-R8)



CRI R values, only R1-R8 are used to calculate final CRI value

R1	R2	R3	R4	R5	R6	R7	R8	R9	R10	R11	R12	R13	R14	R15
56.4	87.4	66.5	46.9	65.6	86.5	75.6	37.7	-71.5	81.1	32.7	79.5	63.8	78.1	44.6

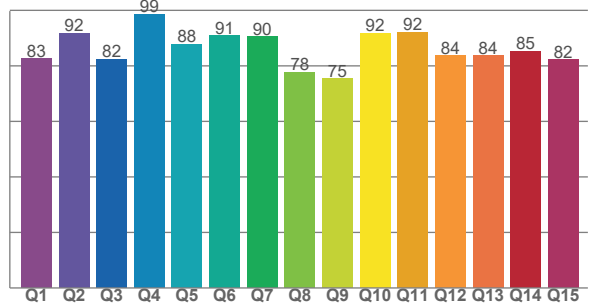
TM30 C values, 16 binned values out of total of 99 C values

C1	C2	C3	C4	C5	C6	C7	C8	C9	C10	C11	C12	C13	C14	C15	C16
63.7	73.5	82.2	88.9	84.8	76.0	77.0	75.7	88.3	90.1	72.5	76.0	70.1	60.3	62.6	66.8

CQS Q values

Q1	Q2	Q3	Q4	Q5	Q6	Q7	Q8	Q9	Q10	Q11	Q12	Q13	Q14	Q15
82.5	91.7	82.5	98.6	87.9	91.0	90.4	77.7	75.4	91.8	92.2	83.6	83.7	85.3	82.2

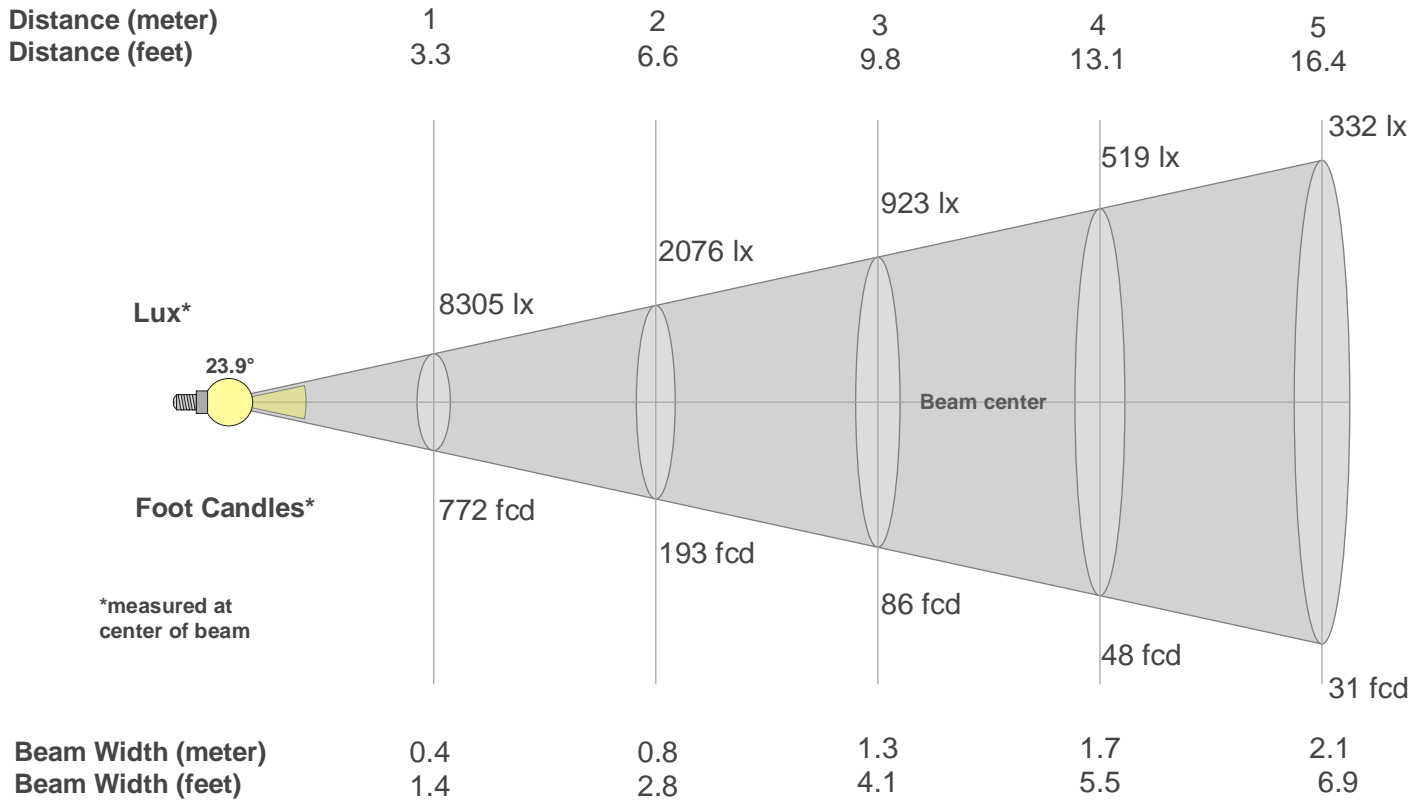
CQS: 85.2



## Color Parameters

Color Temperature	Color Rendering Index	Red Component	Color Fidelity	Color Gamut	Color Quality Scale	Color Coordinate CIE 1931	Color Coordinate CIE 1931	Color Coordinate	Color Coordinate	Color Deviation from Black Body
CCT	CRI	CRI R9	TM30 Rf	TM30 Rg	CQS	x	y	u	v	$\Delta uv$
9811 K	65.3	-71.5	77.3	119.4	85.2	0.292	0.269	0.207	0.286	-0.0210

## Beam Details



Beam Intensities from 1-20m

m	1	2	3	4	5	6	7	8	9	10	11	12	13	14	15	16	17	18	19	20
ft	3.3	6.6	9.8	13.1	16.4	19.7	23	26.2	29.5	32.8	36.1	39.4	42.7	45.9	49.2	52.5	55.8	59.1	62.3	65.6
lx	8305	2076	923	519	332	231	169	130	103	83	69	58	49	42	37	32	29	26	23	21
fcd	771.6	192.9	85.7	48.2	30.9	21.4	15.7	12.1	9.5	7.7	6.4	5.4	4.6	3.9	3.4	3	2.7	2.4	2.1	1.9

Intensities in 0° C-plane

0°	2°	4°	6°	8°	10°	12°	14°	16°	18°	20°	22°	24°	26°	28°	30°	32°	34°	36°	38°
8305	8160	7671	6942	6035	5092	4120	3226	2411	1793	1311	990	748	578	455	356	296	228	191	164
100%	98%	92%	84%	73%	61%	50%	39%	29%	22%	16%	12%	9%	7%	5%	4%	4%	3%	2%	2%

Intensities in 90° C-plane

0°	2°	4°	6°	8°	10°	12°	14°	16°	18°	20°	22°	24°	26°	28°	30°	32°	34°	36°	38°
8305	8160	7671	6942	6035	5092	4120	3226	2411	1793	1311	990	748	578	455	356	296	228	191	164
100%	98%	92%	84%	73%	61%	50%	39%	29%	22%	16%	12%	9%	7%	5%	4%	4%	3%	2%	2%

Intensities in 180° C-plane

0°	2°	4°	6°	8°	10°	12°	14°	16°	18°	20°	22°	24°	26°	28°	30°	32°	34°	36°	38°
8305	8112	7628	6907	6042	5082	4121	3201	2415	1786	1323	993	757	586	461	368	295	241	197	169
100%	98%	92%	83%	73%	61%	50%	39%	29%	22%	16%	12%	9%	7%	6%	4%	4%	3%	2%	2%

Intensities in 270° C-plane

0°	2°	4°	6°	8°	10°	12°	14°	16°	18°	20°	22°	24°	26°	28°	30°	32°	34°	36°	38°
8305	8112	7628	6907	6042	5082	4121	3201	2415	1786	1323	993	757	586	461	368	295	241	197	169
100%	98%	92%	83%	73%	61%	50%	39%	29%	22%	16%	12%	9%	7%	6%	4%	4%	3%	2%	2%

Beam Angle 50%	Field Angle 10%	Cutoff Angle 2,5%	Intensity Ratio in 120° Cone	Intensity Ratio in 90° Cone
23.9°	46.5°	70.3°	98.1%	94.3%